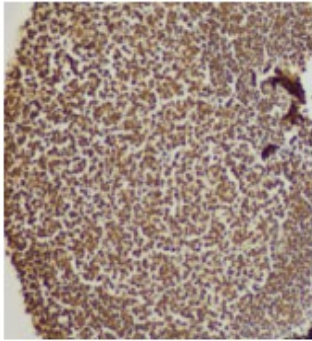
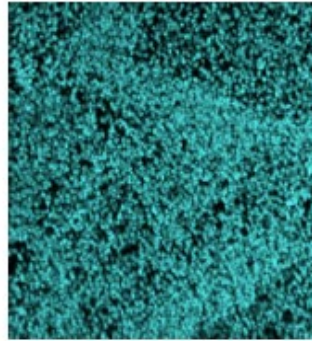
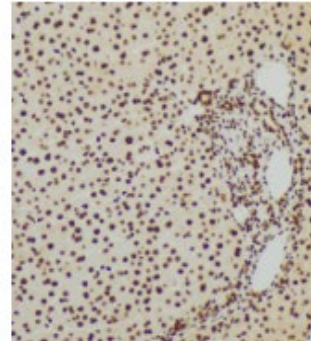


dsDNA (3519DNA) – 89Y**Catalog:** 708901**Clone:** 3519DNA**Isotype:** Mouse IgG2a**Reactivity:** Human*, Mouse***Application:** MIBI–FFPE**Storage:** Supplied in antibody stabilizer with 0.05% sodium azide. Store at 4°C.

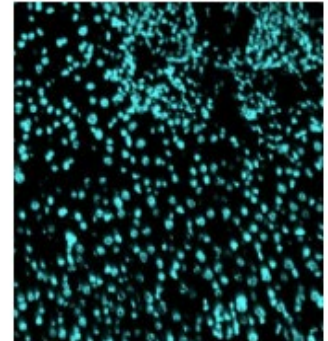
IHC: dsDNA antibody staining of FFPE human tonsil



MIBI: dsDNA antibody staining (cyan) of FFPE human tonsil



IHC: dsDNA antibody staining of FFPE human liver



MIBI: dsDNA antibody staining (cyan) of FFPE human liver

Background dsDNA is localized to all nucleated cells.

Validation Each lot of conjugated antibody is quality control tested by staining tissue following the MIBI Staining Protocol optimized for the applicable tissue format with subsequent MIBIScope analysis using the appropriate positive and negative tissue field of views. These results are pathologist verified.

Recommended Usage Human and Mouse FFPE: 1:100 dilution. For optimal results, the antibody should be titrated for each desired application.

* Conjugate tested on human and mouse FFPE tissue.