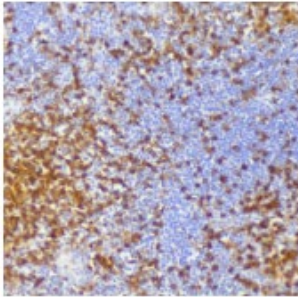
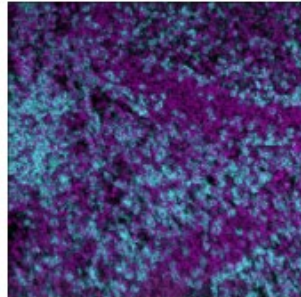


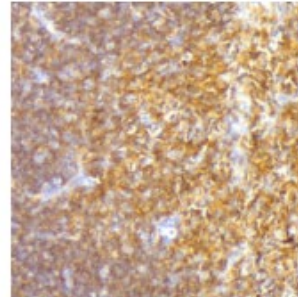
CD4 (EPR6855) – 143Nd

Catalog: 714301**Clone:** D7A EP30956E**Isotype:** Rabbit IgG**Reactivity:** Human***Application:** MIBI–FFPE**Storage:** Supplied in antibody stabilizer with 0.05% sodium azide. Store at 4°C.

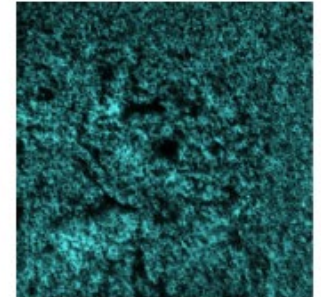
IHC: CD4 antibody staining of FFPE human tonsil



MIBI: CD4 antibody staining (cyan) of FFPE human tonsil, counterstained with dsDNA (magenta)



IHC: CD4 antibody staining of FFPE human thymus



MIBI: CD4 antibody staining (cyan) of FFPE human thymus; dsDNA is not shown. Background

Background

CD4 is expressed by thymocytes, helper T cells, dendritic cells, type II NKT cells, and monocytes/macrophages. CD4 is a member of the immunoglobulin superfamily and is part of the TCR/CD3 complex, binding to MHC class II molecules and participating in signal transduction through recruitment of tyrosine kinase Lck. CD4 expression is used to identify helper T cells of which there are many different subsets including Th1, Th2, Th9, Th17, regulatory T cell, follicular helper T cell, each contributing to immune function through their unique cytokine profile.

Validation

Each lot of conjugated antibody is quality control tested by staining tissue following the MIBI Staining Protocol optimized for the applicable tissue format with subsequent MIBIScope analysis using the appropriate positive and negative tissue field of views. These results are pathologist verified.

Recommended Usage

Human FFPE: 1:100 dilution. For optimal results, the antibody should be titrated for each desired application.

References

1. Rishi Vishal Luckheeram, Rui Zhou, Asha Devi Verma, and Bing Xia, "CD4+T Cells: Differentiation and Functions," Clinical and Developmental Immunology, vol. 2012, Article ID 925135, 12 pages, 2012.

* Conjugate tested on human and mouse FFPE tissue.