

CD4 (BLR167J)- 143Nd

Catalog: 714304

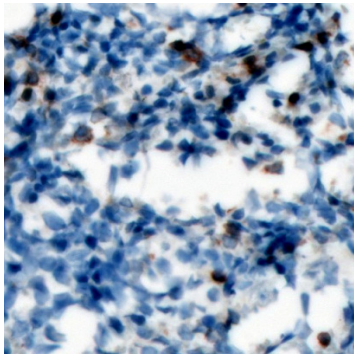
Clone: BLR167J

Isotype: Rabbit IgG

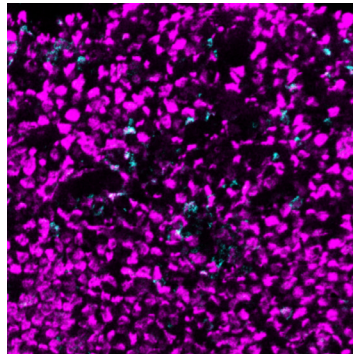
Reactivity: Mouse*

Application: MIBI-FFPE

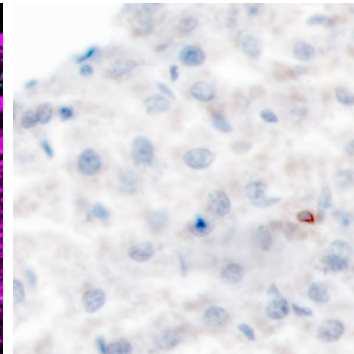
Storage: Supplied in antibody stabilizer with 0.05% sodium azide. Store at 4°C



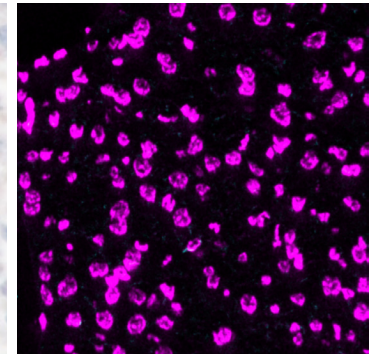
IHC: CD4 staining of FFPE mouse spleen



MIBI: CD4 staining (cyan) of FFPE mouse spleen, counterstained with dsDNA (magenta)



IHC: CD4 staining of FFPE mouse liver



MIBI: CD4 staining (cyan) of FFPE mouse liver, counterstained with dsDNA (magenta)

Background

CD4 is expressed by thymocytes, helper T cells, dendritic cells, type II NKT cells, and monocytes/macrophages. CD4 is a member of the immunoglobulin superfamily and is part of the TCR/CD3 complex, binding to MHC class II molecules and participating in signal transduction through recruitment of tyrosine kinase Lck. CD4 expression is used to identify helper T cells of which there are many different subsets including Th1, Th2, Th9, Th17, regulatory T cell, follicular helper T cell, each contributing to immune function through their unique cytokine profile.

Validation

Each lot of conjugated antibody is quality control tested by staining tissue following the MIBI Staining Protocol optimized for the applicable tissue format with subsequent MIBIScope analysis using the appropriate positive and negative tissue field of views.

Recommended Usage

Mouse FFPE: 3 ug/mL dilution. For optimal results, the antibody should be titrated for each desired application.

References

Rishi Vishal Luckheeram, Rui Zhou, Asha Devi Verma, and Bing Xia, "CD4+T Cells: Differentiation and Functions," Clinical and Developmental Immunology, vol. 2012, Article ID 925135, 12 pages, 2012.

* Conjugate tested on mouse tissue.