

CD11b [EPR1344] - 155Gd

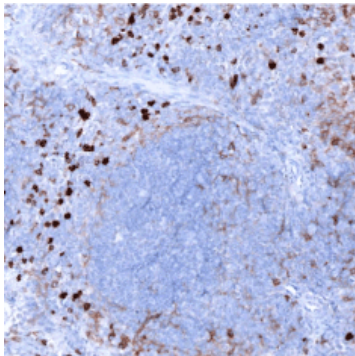
Catalog: 715504

Clone: EPR1344

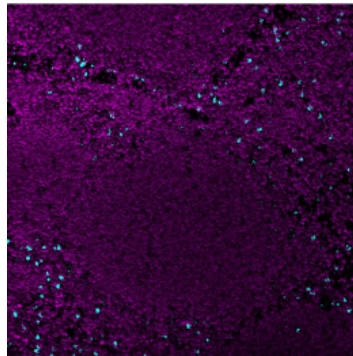
Isotype: Rabbit IgG

Reactivity: Mouse*, Rat, Human*, Pig, and Rhesus Monkey

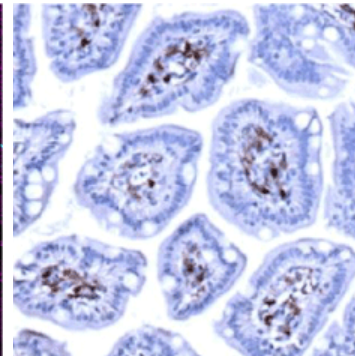
Application: MIBI-FFPE

Storage: Supplied in antibody stabilizer with 0.05% sodium azide. Store at 4°C


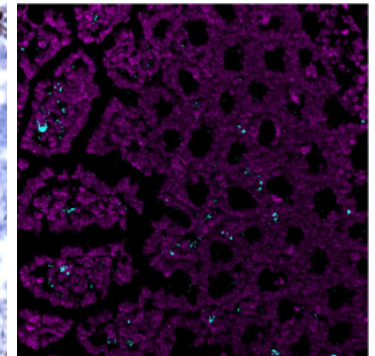
IHC: CD11b staining of FFPE mouse spleen



MIBI: CD11b staining (cyan) of FFPE mouse spleen, costained with dsDNA (magenta)



IHC: CD11b staining of FFPE mouse ileum



MIBI: CD11b staining (cyan) of FFPE mouse ileum, costained with dsDNA (magenta)

Background

CD11b belongs to the integrin alpha chain family and is predominantly expressed on myeloid cell populations such as macrophages, monocytes, neutrophils and classical dendritic cells. CD11b expression can also be used to identify microglia in the brain and spinal cord.

Validation

Each lot of conjugated antibody is quality control tested by staining tissue following the MIBI Staining Protocol optimized for the applicable tissue format with subsequent MIBIScope analysis of stained tissue microarray using the appropriate positive and negative tissue field of views.

Recommended Usage

Mouse FFPE: 1 ug/mL dilution. For optimal results, the antibody should be titrated for each desired application.

References

- R S Larson, T A Springer. Structure and function of leukocyte integrins. Immunol Rev. 1990 Apr;114:181-217.
 Melanie Greter et al. Microglia Versus Myeloid Cell Nomenclature during Brain Inflammation. Front Immunol. 2015; 6: 249.

* Conjugate tested on human and mouse FFPE tissue.