

CD206 [E2L9N] - 171Yb

Catalog: 717103

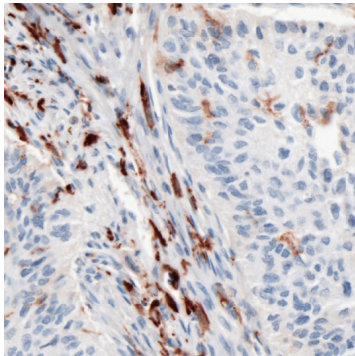
Clone: E2L9N

Isotype: Rabbit IgG

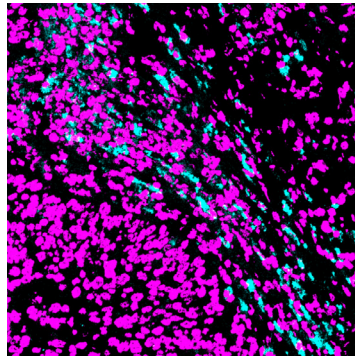
Reactivity: Human*

Application: MIBI-FFPE

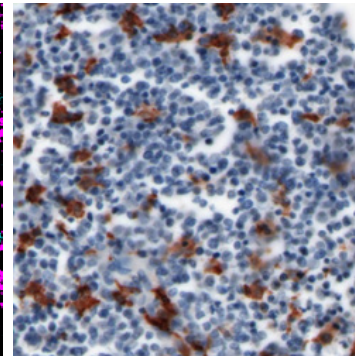
Storage: Supplied in antibody stabilizer with 0.05% sodium azide. Store at 4°C



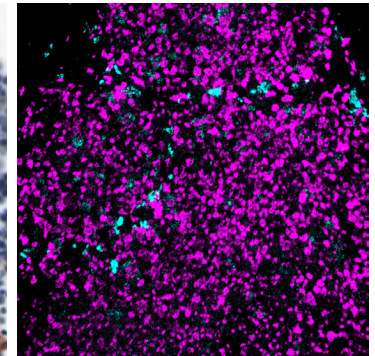
IHC: CD206 antibody staining of FFPE human lung cancer



MIBI: CD206 staining (cyan) of FFPE human lung cancer, counterstained with dsDNA (magenta)



IHC: CD206 antibody staining of FFPE human thymus



MIBI: CD206 staining (cyan) of FFPE human thymus, counterstained with dsDNA (magenta)

Background

The mannose receptor CD206 is predominantly expressed on the surface of macrophages, dendritic cells and liver sinusoidal endothelial cells. CD206 mediates endocytosis and phagocytosis as well as activation of macrophages and antigen presentation and, therefore, plays an important role in host defense. Expression of CD206 on tumor-associated macrophages has been associated with immunosuppression, tumorigenesis and resistance to cancer therapies.

Validation

Each lot of conjugated antibody is quality control tested by staining tissue following the MIBI Staining Protocol optimized for the applicable tissue format with subsequent MIBIScope analysis of stained tissue microarray using the appropriate positive and negative tissue field of views.

Recommended Usage

Human FFPE: 3.5 ug/mL dilution.
For optimal results, the antibody should be titrated for each desired application.

References

Pablo Scodeller, et al. Precision targeting of tumor macrophages with a CD206 binding peptide. *Sci Rep.* 2017 Nov 7;7(1):14655.

* Conjugate tested on human tissue.