

CD21 [EP3093] - 170Er

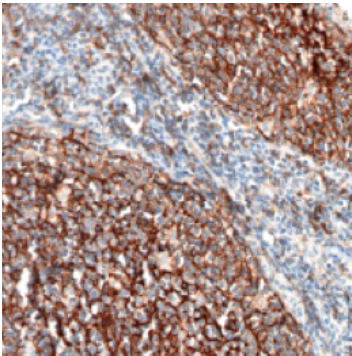
Catalog: 717001

Clone: EP3093

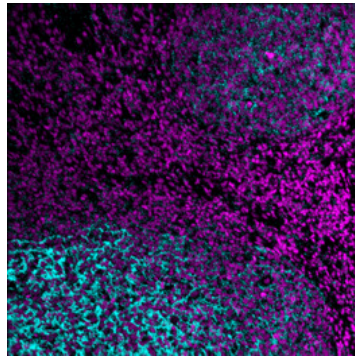
Isotype: Rabbit IgG

Reactivity: Human*

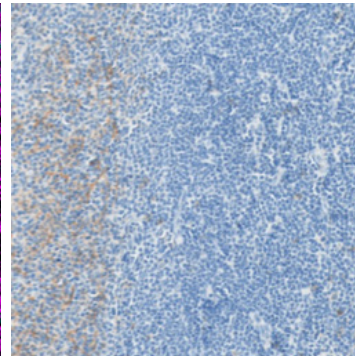
Application: MIBI-FFPE

Storage: Supplied in antibody stabilizer with 0.05% sodium azide. Store at 4°C


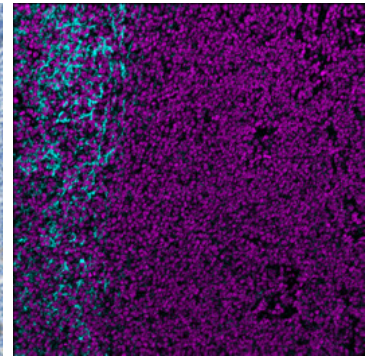
IHC: CD21 staining of FFPE human tonsil



MIBI: CD21 staining (cyan) of FFPE human tonsil, costained with dsDNA (magenta)



IHC: CD21 staining of FFPE human follicular lymphoma



MIBI: CD21 staining (cyan) of FFPE human follicular lymphoma, costained with dsDNA (magenta)

Background

CD21 (complement C3d receptor (C3dR), complement receptor 2 (CR2), and Epstein-Barr virus receptor) is expressed on B cells, follicular dendritic cells, subsets of thymocytes and T cells, and pharyngeal epithelial cells. CD21 forms the B cell coreceptor complex with CD19 and CD81. EBV binds to CD21 and genetic variations in CD21 are associated with systemic lupus erythematosus.

Validation

Each lot of conjugated antibody is quality control tested by staining tissue following the MIBI Staining Protocol optimized for the applicable tissue format with subsequent MIBIScope analysis using the appropriate positive and negative tissue field of views. These results are pathologist verified.

Recommended Usage

Human FFPE: 1:100 dilution. For optimal results, the antibody should be titrated for each desired application.

References

Rozen daal R., Carroll M.C. Complement receptors CD21 and CD35 in humoral immunity. *Immunol Rev.* 2007; **219**:157-66.

* Conjugate tested on human tissue.